

Regional Health Information Organization

MedInf405 – Sec52

HIT Integration, Interoperability, & Standards

Kary Mason

Constance Nichols

Michelle Neumeister

Michael Rittenhouse

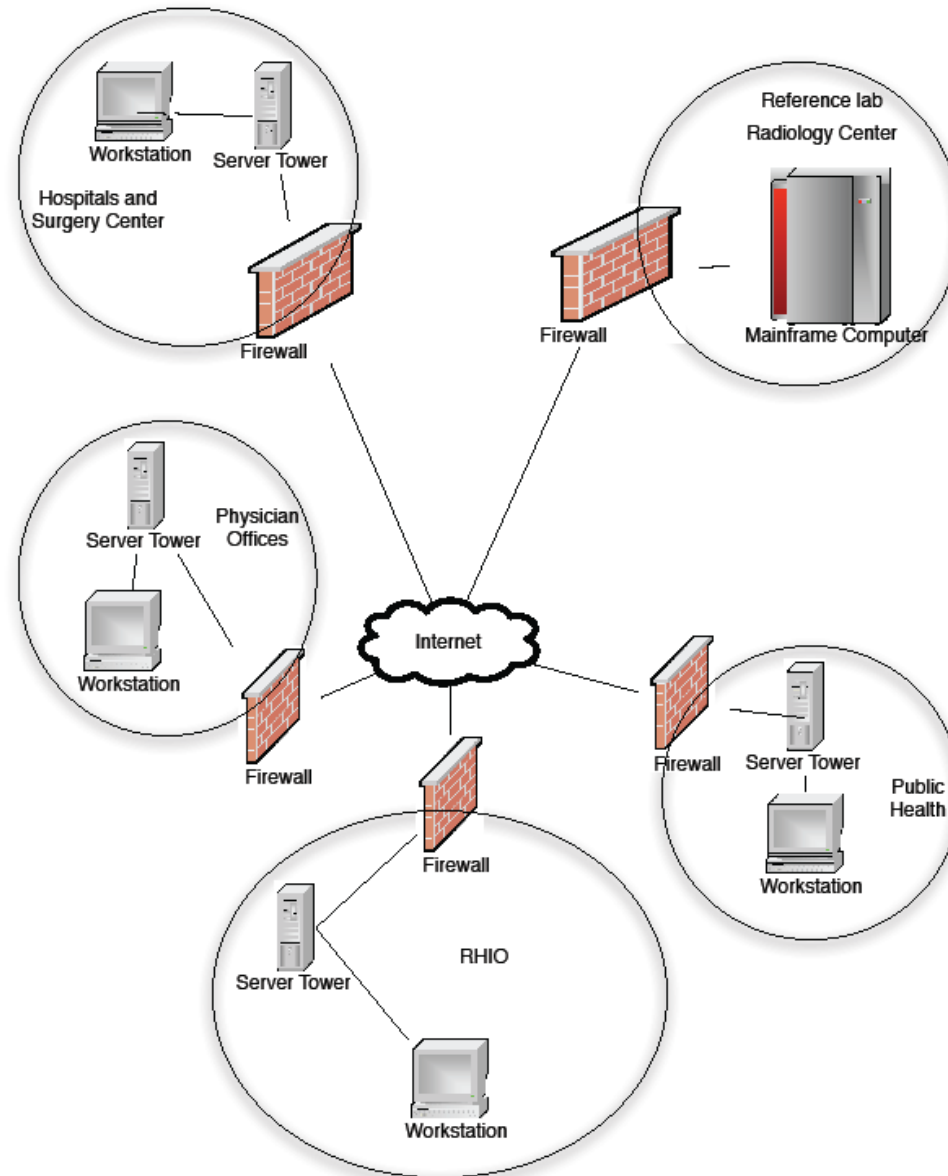
Agenda

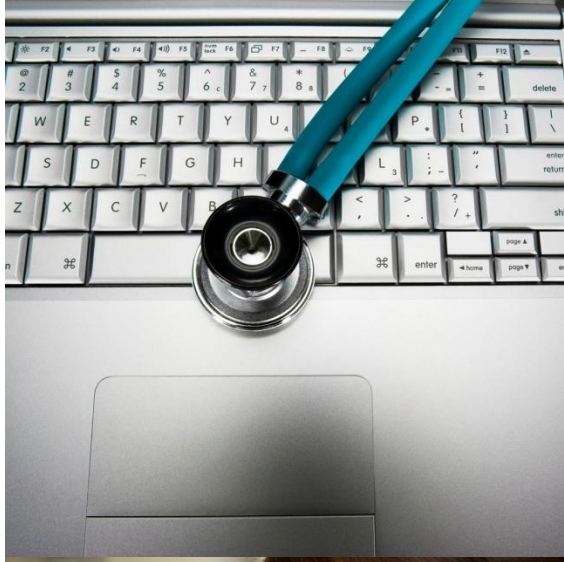
- Information Architecture
- Origin of Data Elements
- Data Flow
- Project Summary



Information Architecture

Information Architecture

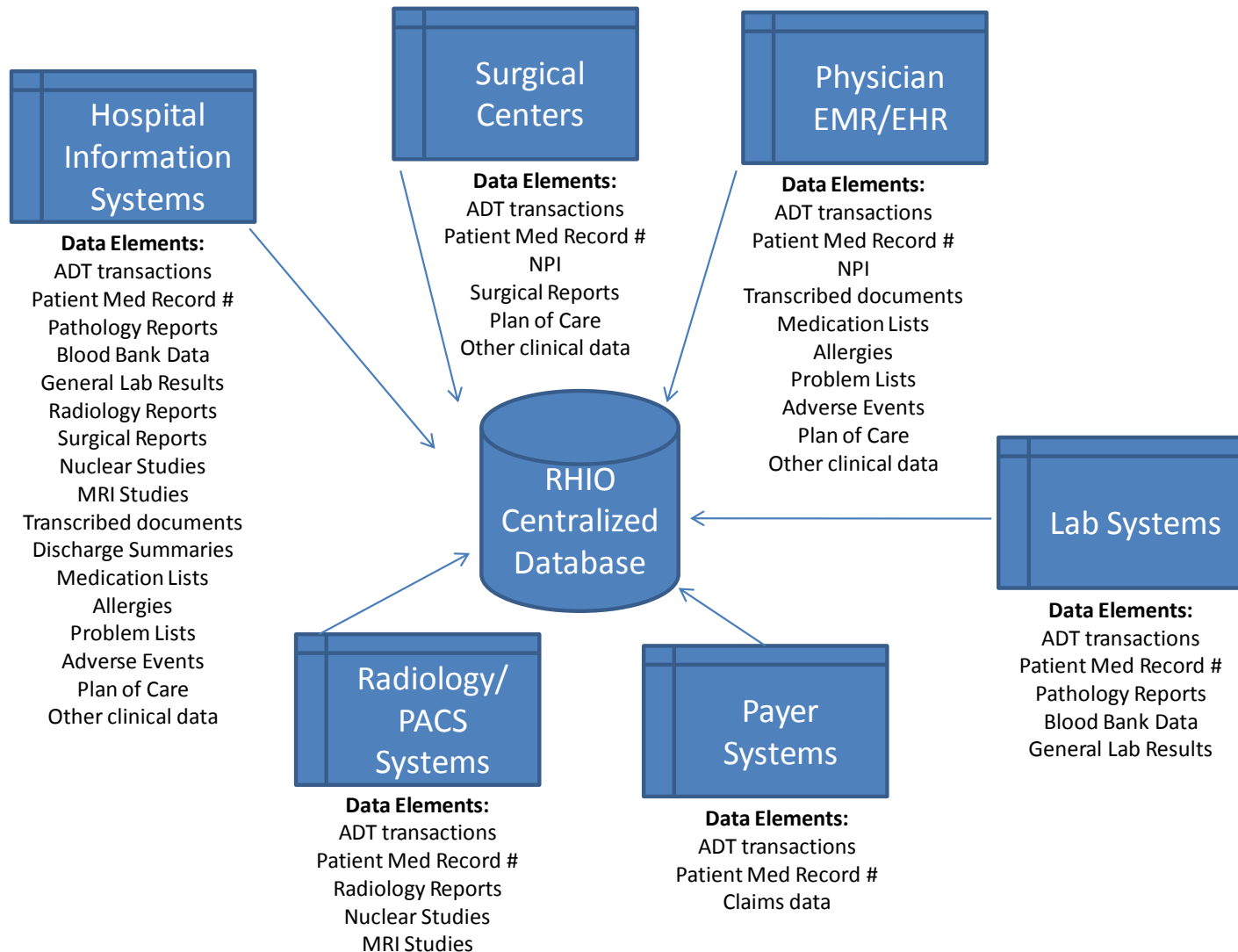




Origin of Data Elements

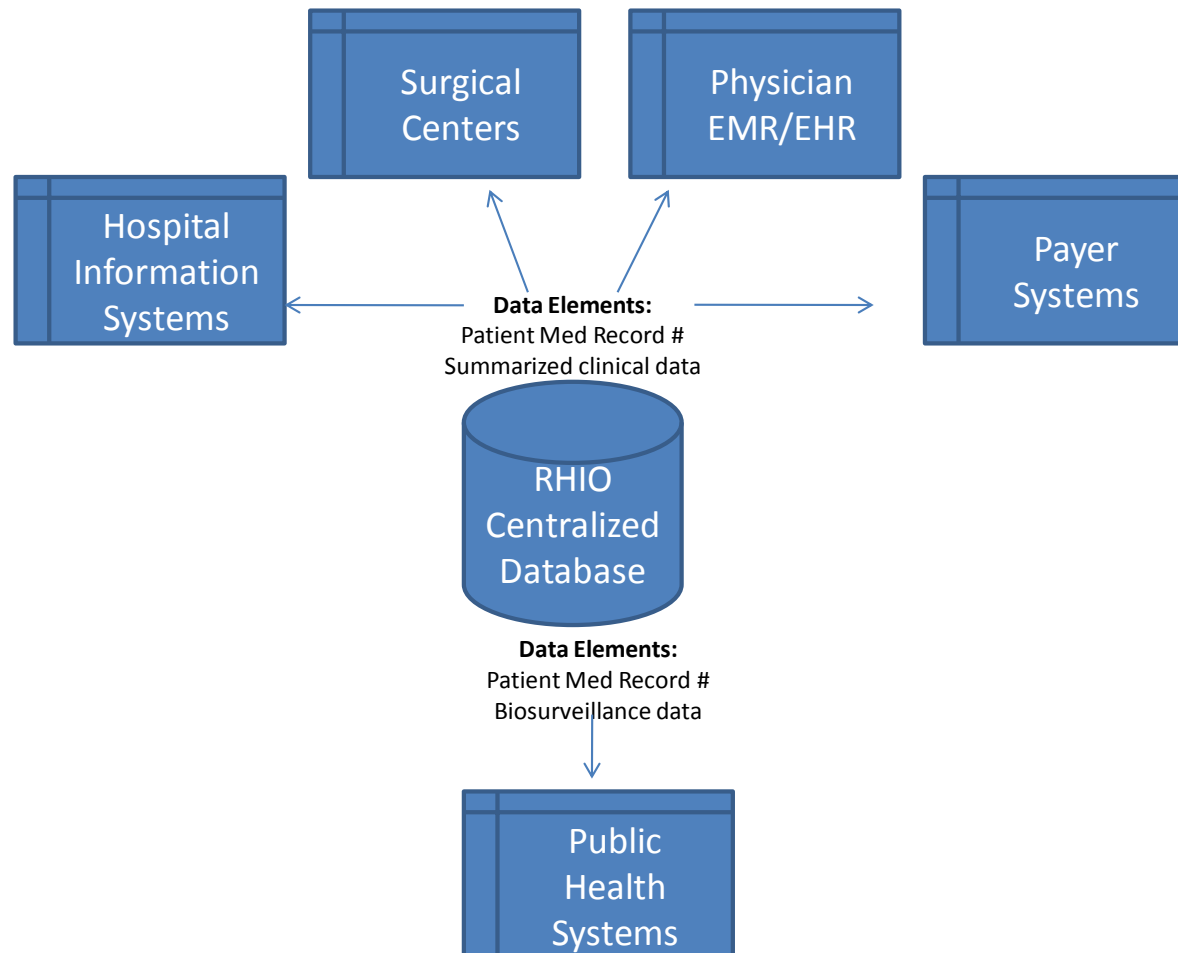
Origin of Data Elements

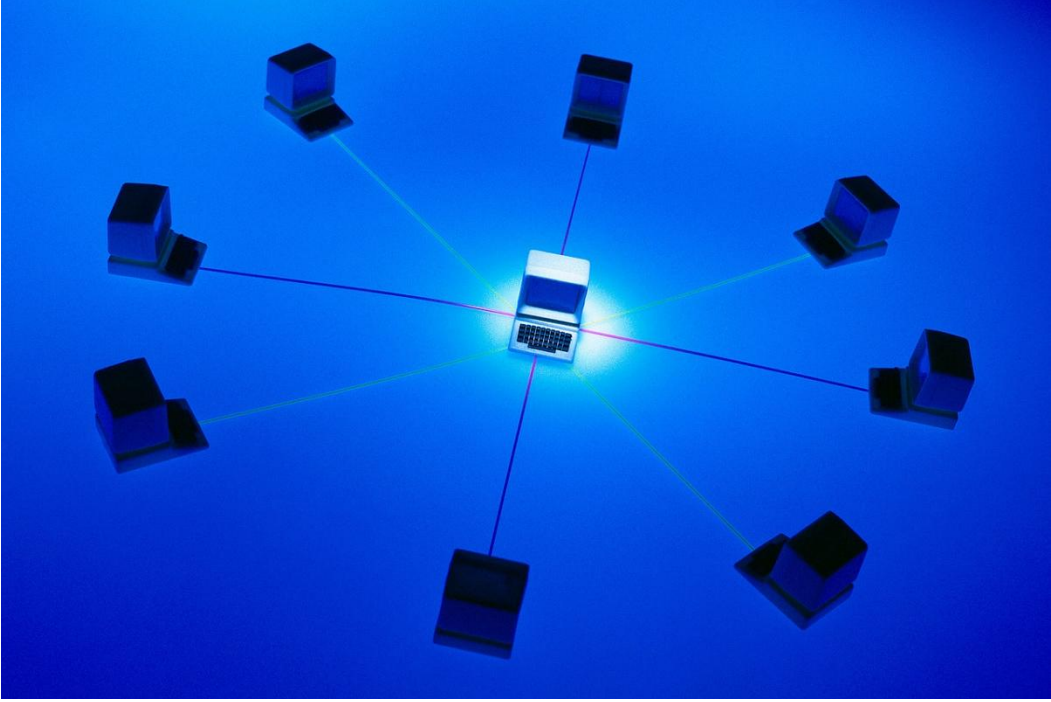
Data Elements to be Pushed to the RHIO Central Database



Origin of Data Elements

Data Elements to be Pulled from the RHIO Central Database

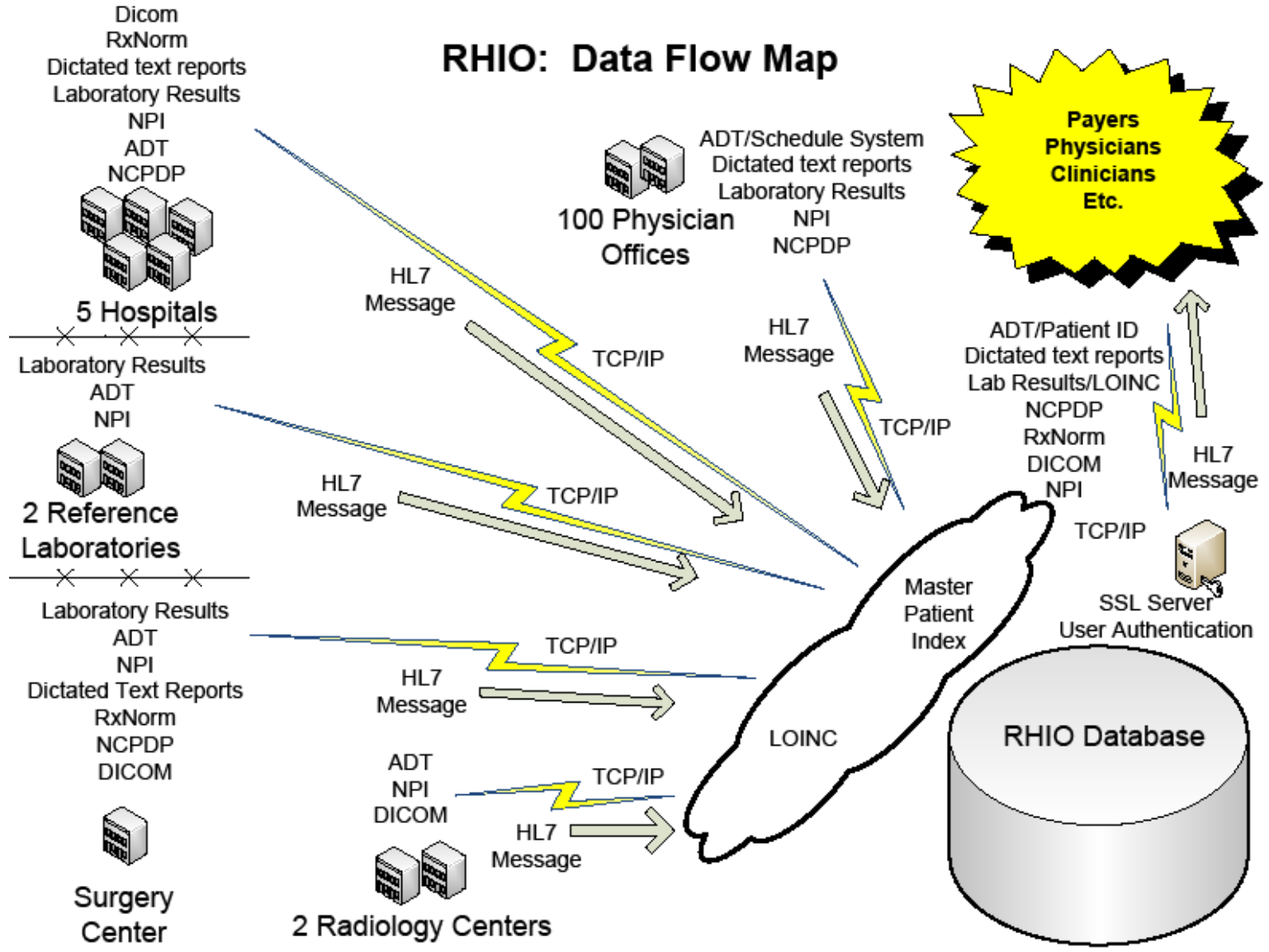


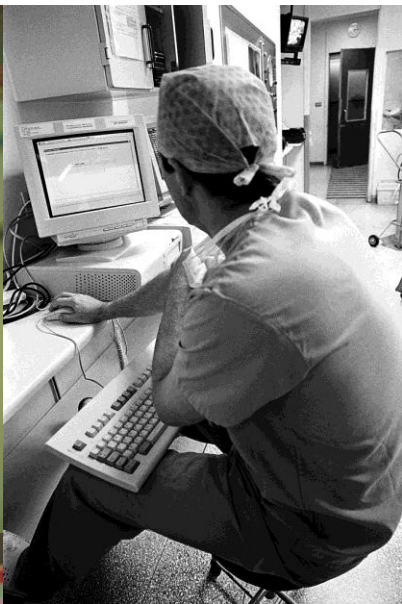


Data Flow

Data Flow

RHIO: Data Flow Map





Project Summary

Project Summary

RHIOs help create a foundation for connecting:

- Providers
- Laboratories
- Radiology Centers
- Payers
- Hospitals
- Public Health Agencies

RHIO participants will improve their care delivery by:

- Increasing efficiencies and effectiveness
- Eliminating duplications
- Increasing medical record availability
- Improving flow of information
- Increasing patient safety
- Improving patient satisfaction
- Decreasing costs

Project Summary

- RHIO Critical Success Factors
 - Identifying stakeholders
 - Identifying stakeholders' needs
 - Engaging stakeholders early in the software development process
 - Management council must decide which standards to use
 - Participants' information systems must be able to push and pull data from the RHIO
 - Management Council must address:
 - Data Ownership
 - Access & Security
 - Inappropriate use of patient data
 - Research use
 - Decide on data model and architecture
 - Funding

RHIO: Does Your State Have One?

<http://www.himss.org/StateDashboard/RHIOList.aspx?Status=Active>



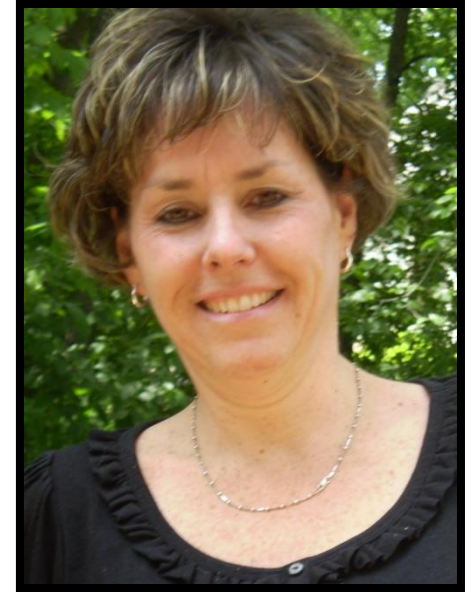
RHIO



Questions



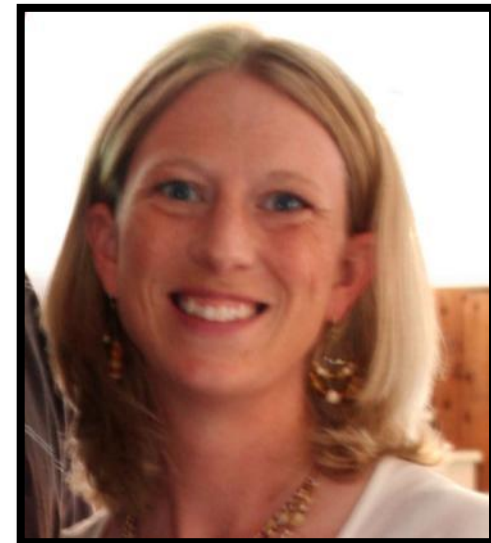
Mike Rittenhouse



Kary Mason



Connie Nichols



Michelle Neumeister